



OUR FIRE PUMPS ARE **PEERLESS**

— FULL RANGE EXPERTISE

PEERLESS PRODUCT BRAND > UL LISTED, ULC LISTED AND FM APPROVED

be
think
innovate

GRUNDFOS 

A formidable team of industry experts for *your unique fire pump solution.*

Peerless Fire Pump Units and Enclosed Packaged Systems

Thousands of Peerless Pump installations (UL, ULC or FM approved) deliver superior fire protection to facilities worldwide. For over eighty years Peerless Pump has been offering complete service, from engineering assistance to in-house fabrication to field start-up. Products are designed from a broad selection of pumps, drives, controls, baseplates and accessories. Fire pump choices include horizontal split case, in-line and end suction centrifugal, as well as vertical turbines pumps.



The Right Solution for Reliability

Reliability is one of the hallmarks of Peerless Pump technology, and it's built into every aspect of our distinctive pump designs. Our mindset is to construct pumps of the highest quality by paying attention to the details and investing in innovative research and development.

Building contractors, specifying engineers and facility managers alike trust the recognized global leader in pump technology and solutions. They look to Grundfos' expertise in developing new and improved ways to meet water and energy challenges in commercial buildings. Arriving at a solution that works requires the merging of many professional skill sets. Choosing Grundfos as your partner extends beyond sale and delivery and offers a unique collaborative partnership.



Providing Pumping Solutions to the Global Commercial / Fire Market, Peerless Can Fulfill Your Requirements:

- Recognized leader in the fire pump industry
- Thousands of installations of all sizes and types
- Represented by fully qualified personnel in most major U.S. and international cities
- Complete in-house fabrication capabilities
- Mechanical-run test capabilities
- Horizontal models for capacities to 5,000 gpm
- Vertical models for capacities to 5,000 gpm
- In-line models for capacities to 1,500 gpm
- End suction models for capacities to 500 gpm
- Drives: electric motor or diesel engine
- Basic units, packaged systems, and engineered enclosures

A unique collaborative partnership that extends beyond the sale and delivery

Custom Designs

Engineered designs for unusual applications have always been a specialty for Grundfos. From submersibles to end-suction pumps, no application is beyond our technical expertise. Drawing upon our many years of engineering and manufacturing experience is the best way to solve your difficult application, whether it's temperature extremes, or complex configurations.

Anticipating the future

Grundfos invests 5% of its annual revenue into research and development, with nearly 18,000 employees in 55 countries, dedicated to addressing the challenges of tomorrow, today.



Our Competencies

With the most efficient selections and superior local representation, we endeavor to partner with the fire protection contracting community to create the best value possible for each project.

Our long history of innovation in engineered pump systems for building management has opened doors and created a sizeable opportunity for optimizing installations in commercial structures.

Peerless Pump offers both modular and integrated solutions that further simplify installations and commissioning. These reliable solutions are a result of producing the most optimized pump hydraulics, hydraulics and accessories to make everything work holistically while communicating efficiently with the central system controller.

***A recognized global leader
in fire pump systems and accessories.***

The Full Range of Possibilities

Grundfos offers total fire pumping solutions on any scale. Our expertise in the full range of fire pump products and application areas in the commercial buildings sector can be tailored to your specific requirements.



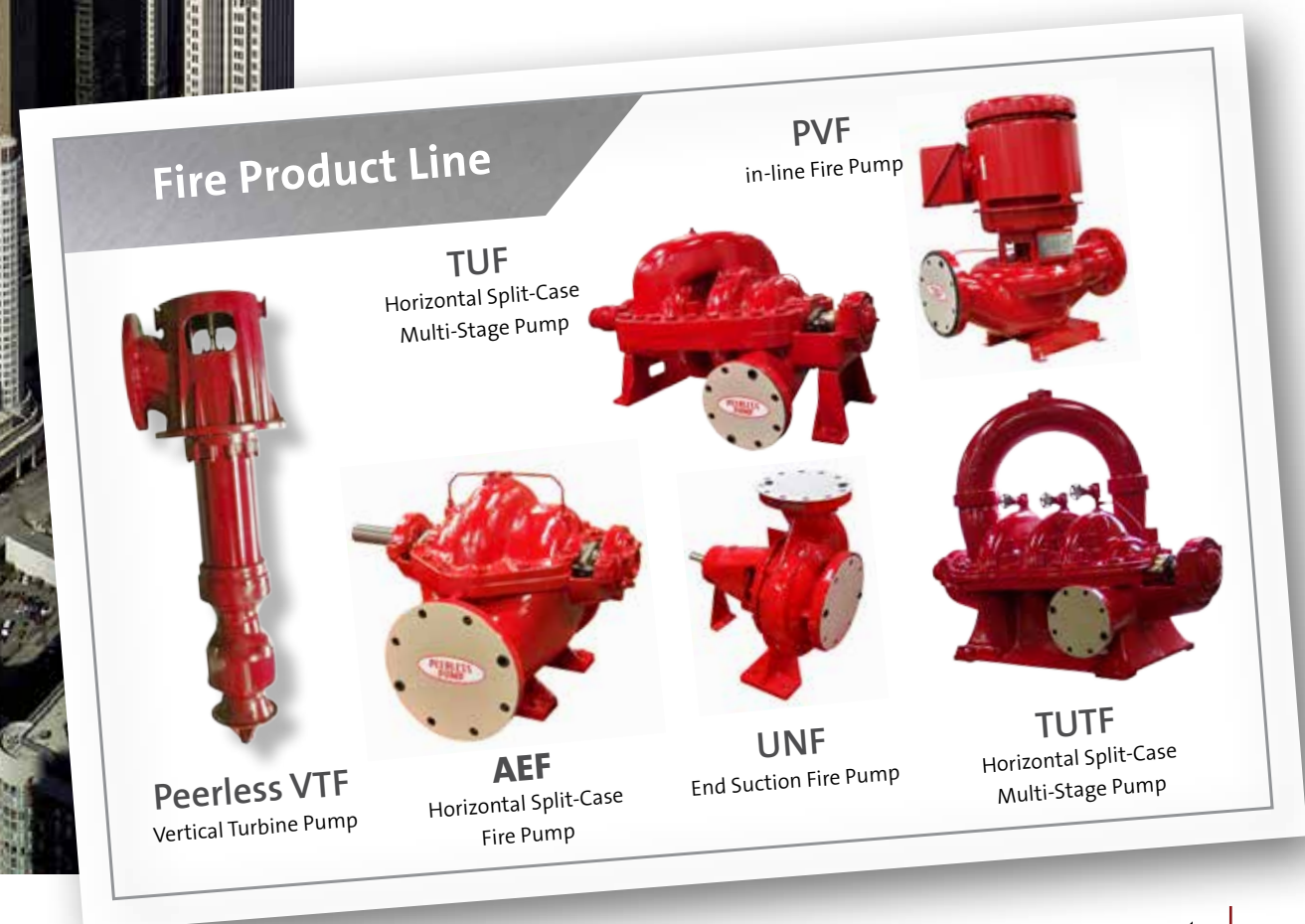


The Peerless Pump Fire Pump Units, Systems, and Enclosed Packaged Systems

Applications vary from small, basic electric motor units to diesel engine driven, enclosed, packaged systems. Standard units are designed to handle fresh water, but special materials are available for sea water applications.

Each enclosed pumping solution is typically a one-of-a-kind, configured by Peerless engineers to meet a specific application and operating condition.

Peerless Pump - A reliable global solution to commercial building and industrial applications



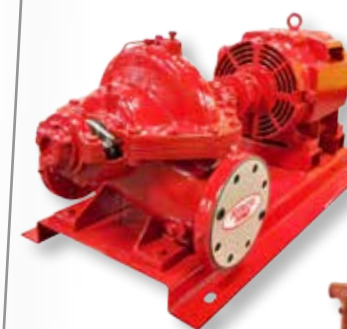


A Reliable Answer to Commercial Building Solutions

Peerless Pump can help you solve your unique needs and challenges, ensuring that the necessary fire protection water flow will meet facility demands and regulations when called upon. This is achieved by using a proven range of durable, horizontal, inline, end suction and vertical turbine pumps. These pumps are uniquely designed to deliver by reacting automatically to changing demands and conditions. To suit each situation, we supply the expertise to ensure that pumps and motors or engines are applied correctly.

***Proven pumping systems for changing
and demanding conditions***

Fire Pump Units



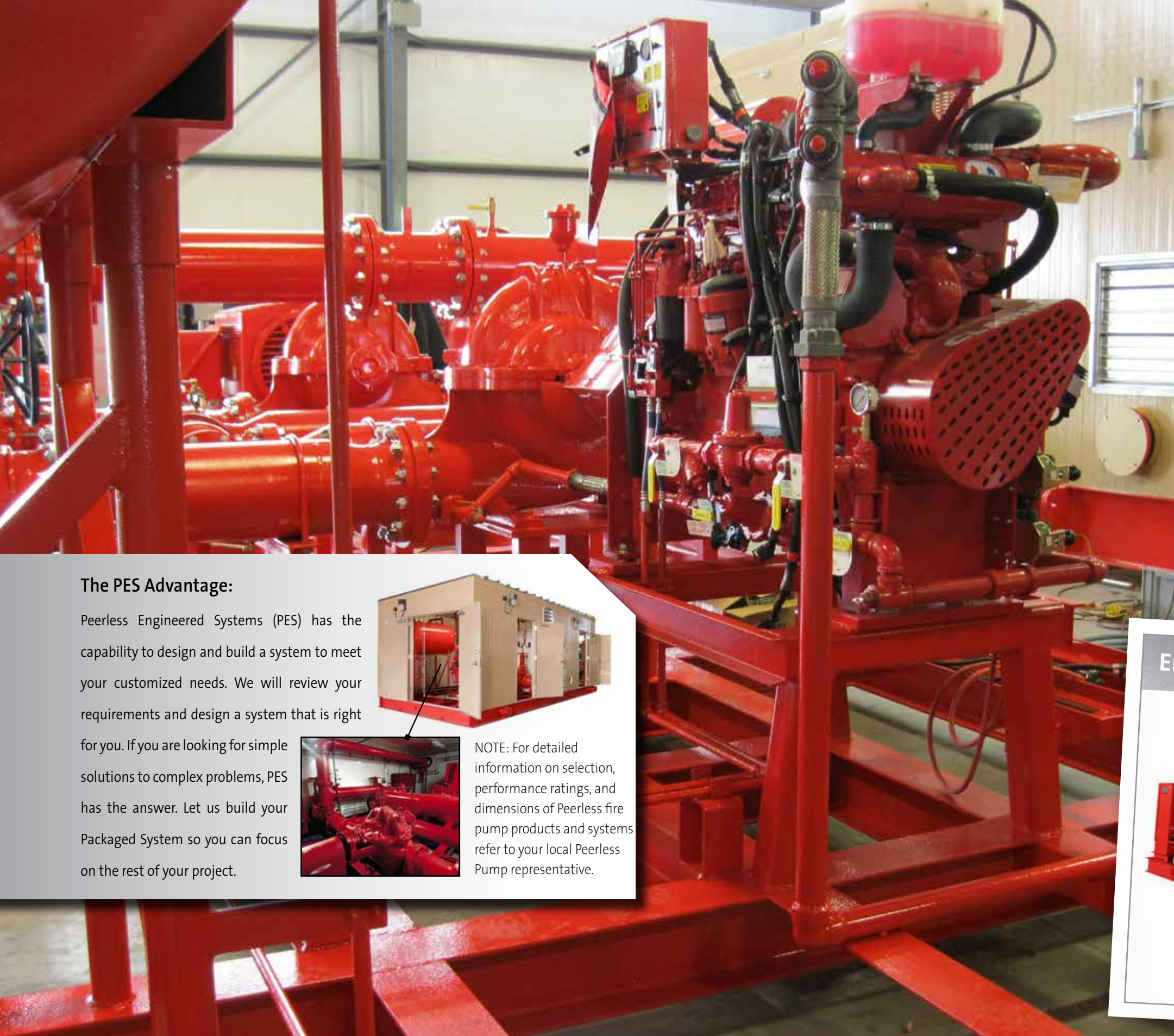
**Electric Motor
Drive Unit**
Horizontal Fire Pump



**Diesel Engine
Drive Unit**
Horizontal Fire Pump



**Electric Motor
Drive Unit**
Inline Fire Pump



The Peerless Pump Fire Pump Units and Enclosed Packaged Systems

Thousands of Peerless Pump installations (UL, ULC or FM approved) deliver superior fire protection to facilities worldwide. For over eighty years Peerless Pump has been offering complete service, from engineering assistance to in-house fabrication to field start-up. Products are designed from a broad selection of pumps, drives, controls, baseplates and accessories. Pump choices include horizontal, in-line and end suction centrifugal fire pumps as well as vertical turbines

State of the art engineered systems arrive ready to install

Applications vary from small, basic electric motor units to diesel engine driven, enclosed, packaged systems. Standard units are designed to handle fresh water, but special materials are available for sea water applications.

The PES Advantage:

Peerless Engineered Systems (PES) has the capability to design and build a system to meet your customized needs. We will review your requirements and design a system that is right for you. If you are looking for simple solutions to complex problems, PES has the answer. Let us build your Packaged System so you can focus on the rest of your project.



NOTE: For detailed information on selection, performance ratings, and dimensions of Peerless fire pump products and systems refer to your local Peerless Pump representative.

Engineered Systems



PES
Vertical Turbine
Diesel Pump

PES
Horizontal Diesel
Driven Pump



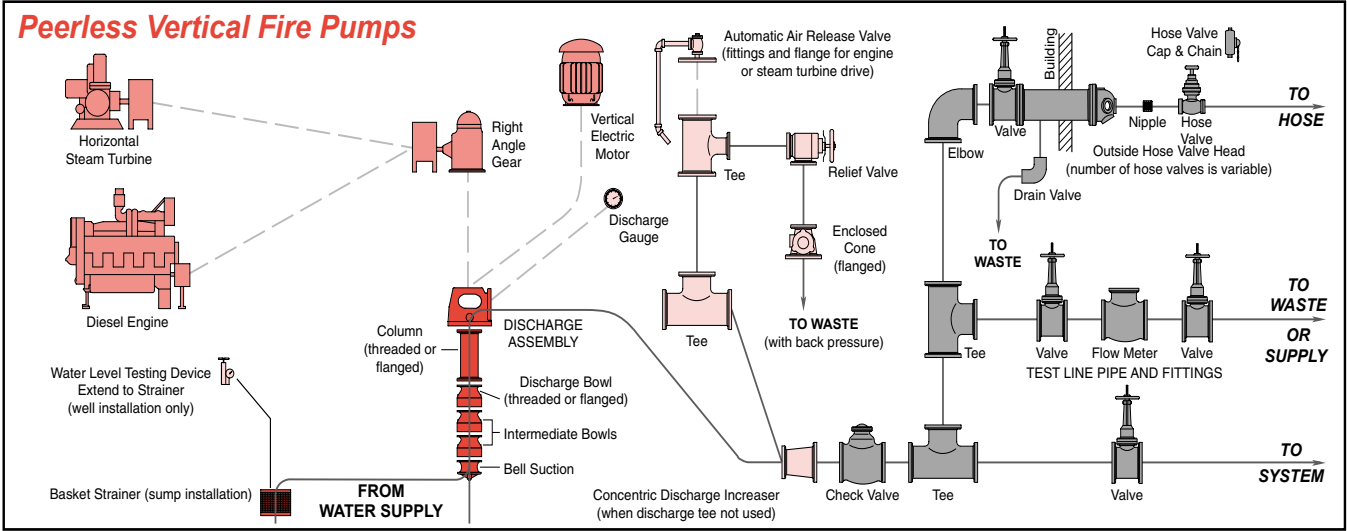
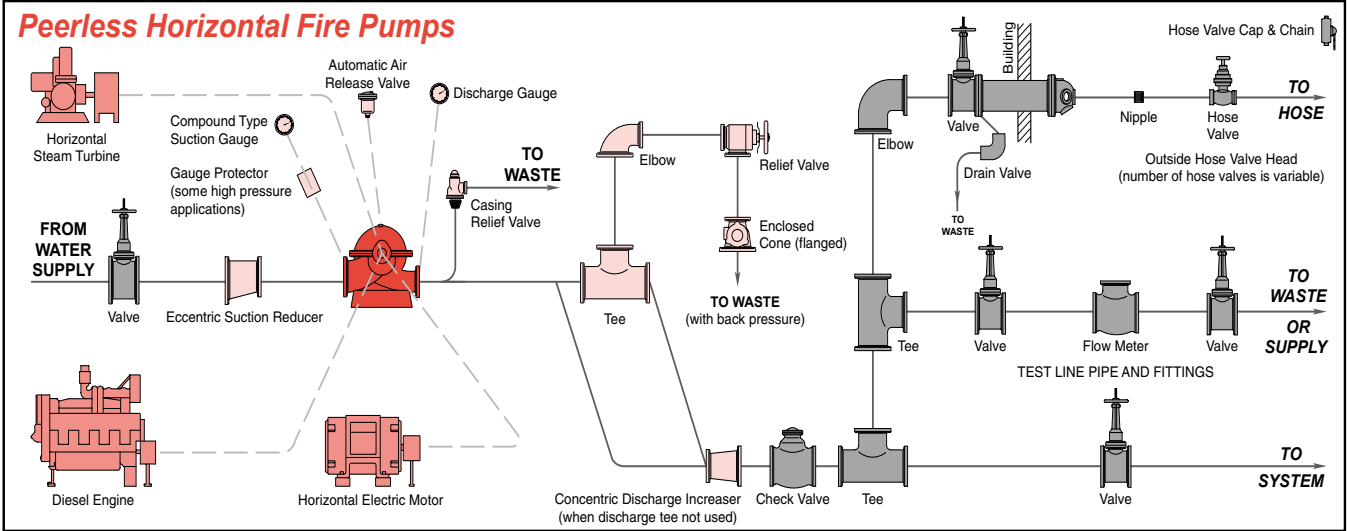
PES
Horizontal Diesel
Driven Pump

Accessories

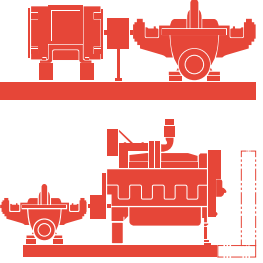
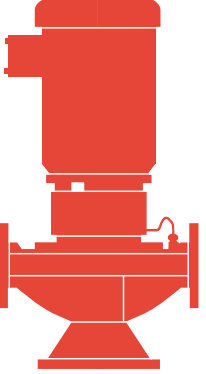
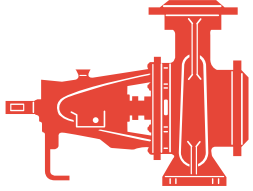

To meet the rigorous requirements of the NFPA 20 standards, certain accessories are required for all fire pump installations. They will vary, however, to fit the needs of each individual installation and the requirements of the local authority having jurisdiction. Peerless Pump provides a wide range of fire pump fittings which include: concentric discharge increaser, casing relief valve, eccentric suction reducer, increasing discharge tee, overflow cone, hose valve head, hose valves, hose valve caps and chains, suction and discharge gauges, relief

valve, automatic air release valve, flow meter, and ball drip valve. No matter what the requirements, Peerless Pump has a complete line of accessories available and can satisfy the requirements of each installation.

The charts below graphically illustrate the many accessories as well as the optional drives that are available with all Peerless fire pumps and packaged systems.



Peerless Fire Product Line
Features and Specifications

				
	Horizontal Fire Pumps, UL Listed, ULC Listed and FM Approved	In-Line Fire Pumps, UL and ULC Listed	End Suction Fire Pumps, UL Listed and FM Approved	Vertical Fire Pumps UL Listed, ULC Listed and FM Approved
Type	Horizontal centrifugal pumps with appropriate fittings for providing water supply to fire protection systems in buildings, plants and yards. Types AF, ADF, AEF, TUF, TUTF.	Compact in-line centrifugal fire pumps with appropriate fittings for providing water supply to fire protection systems in buildings, plants and yards. Type PVF.	End suction centrifugal fire pumps with appropriate fittings for providing water supply to fire protection systems in buildings, plants and yards. Type UNF.	Vertical turbine pumps with appropriate fittings for providing water supply to fire protection systems in buildings, plants and yards.
Capacities	250 to 5,000 gpm (57 to 1,136 m³/hr)	50 to 1,500 gpm (11 to 341 m³/hr)	Up to 1,500 gpm (341 m³/hr)	250 to 5,000 gpm (57 to 1,136 m³/hr)
Head	92 to 1178 feet (28 to 359 meters)	Up to 406 feet (123 meters)	Up to 367 feet (112 meters)	92 to 1,176 feet (28 to 359 meters)
Pressure	Up to 640 psi (45 kg/cm², 4,414 kPa)	Up to 175 psi (12 kg/cm², 1,207 kPa)	Up to 159 psi (11.2 kg/cm², 1,096 kPa)	Up to 500 psi (35.15 kg/cm², 3,515 kPa)
Horsepower	Up to 800 hp (597 kW)	Up to 125 hp (93 kW)	Up to 210 hp (157 kW)	Up to 600 hp (448 kW)
Drives	Horizontal electric motors, and diesel engines	Vertical close coupled electric motors	Horizontal electric motors and diesel engines	Vertical electric motors and diesel engines with right angle gears
Liquids Pumped	Water.	Water.	Water.	Water.
Temperature	Ambient within the limits for satisfactory equipment operation.	Ambient within the limits for satisfactory equipment operation.	Ambient within the limits for satisfactory equipment operation.	Up to 115°F (46°C)
Materials of Construction	Cast iron, bronze fitted as standard. Optional materials available for sea water applications.	Cast iron, bronze fitted.	Cast iron, bronze fitted.	Cast iron, bronze fitted as standard. Optional materials available for sea water applications.



GRUNDFOS FIRE PUMP SYSTEMS

Responsible stewardship and good business

Grundfos is guided by a desire to use technology in innovative ways to support a growing and fast-changing world. We are conscious of the impact our activities can have on people and the environment, and this is precisely why we put sustainability first. From our perspective, sustainability is a healthy mix of responsible stewardship, common sense and good business.

- To be sure that we have enough clean water tomorrow, we should look to more efficient water use today.
- By reducing energy costs on pumping systems, we play our part in conserving resources and making our North American pump and pumping solutions more competitive on local and global markets.

L-FR-SL-001 Rev. 8/2014 (US)

PT. TOYASAE BERKAH ABADI
Grundfos Authorized Dealer
Ruko Sinpasa Commercial, Blok E 06
Jl. Boulevard Selatan Summarecon, Bekasi 17142
Phone: +62 21 2957 2326; +62 21 8945 4182

www.tba.co.id

